

CASPA Fee Assistance Program

Do I Qualify?

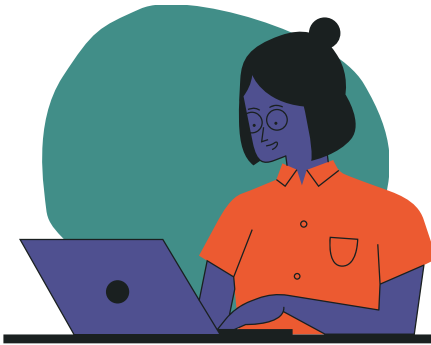
You must have either:

1. Filed a federal income tax return form 1040, 1040A, or 1040EZ with an adjusted gross income that falls 200% below the U.S. Department of Health and Human Services Poverty Guidelines
2. Been listed as a dependent on a filed federal income tax return form 1040, 1040A, or 1040EZ with an adjusted gross income that falls 200% below the U.S. Department of Health and Human Services Poverty Guidelines.



How Do I Apply?

1. Once in your application, click on your name in the upper right corner of the app, then select Fee Assistance Program.
2. Enter households adjusted gross income, current number of members in household, and upload federal income tax form.
3. Await notification (can take up to ten business days). While waiting you are unable to submit your application unless you cancel your request, but you can still work on your application.



How Much Does It Cover?

Each fee waiver covers the cost of your first two programs (\$245).

If you wish to redeem the total amount of the fee waiver, you must submit your application to two programs at the same time by clicking **SUBMIT ALL; otherwise, you'll forfeit any remaining balance.**



Don't Forget!

The 23-24 CASPA Cycle charges \$184 for the first program and \$61 for each additional program you apply to. When you submit your application, the waiver amount will be automatically deducted from your total fees. You'll be responsible for additional balances.

Did You Know?

If a PA program offers a secondary fee waiver, it will be clearly indicated on their program page within the CASPA application.

To help remove one area of potential bias, PA programs will no longer be able to see if you've applied for or been granted a fee waiver.

HAVE MORE QUESTIONS?

REFER TO THE [CASPA APPLICANT HELP CENTER](#) OR CONTACT CASPA CUSTOMER SERVICE: CASPAINFO@CASPAONLINEORG OR (617) 612-2080